

WinSoft®

Your Test & Measurement
Partner

- ▶ Phase Noise
- ▶ IQ (Waveform)
- ▶ Spectrum Emission Mask (SEM)
- ▶ Intermodulation (IMD)
- ▶ Occupied Bandwidth (OBW)
- ▶ Channel Power (CHP)

RF Analyzer-RFA™

A Soft Panel for Controlling your PXI RF modules

The **RF Analyzer (RFA)**, is an intuitive software panel that enables you to use your RF PXI modules as a Classical, commonly used Spectrum Analyzer.

The RFA, combined with PXI modules, functions as a subset of a traditional Spectrum Analyzer. Its modular design enables the integration of new modules as they become available.

Current function value readouts (such as *Center Frequency, Frequency Span, Reference Level, Resolution Bandwidth,*

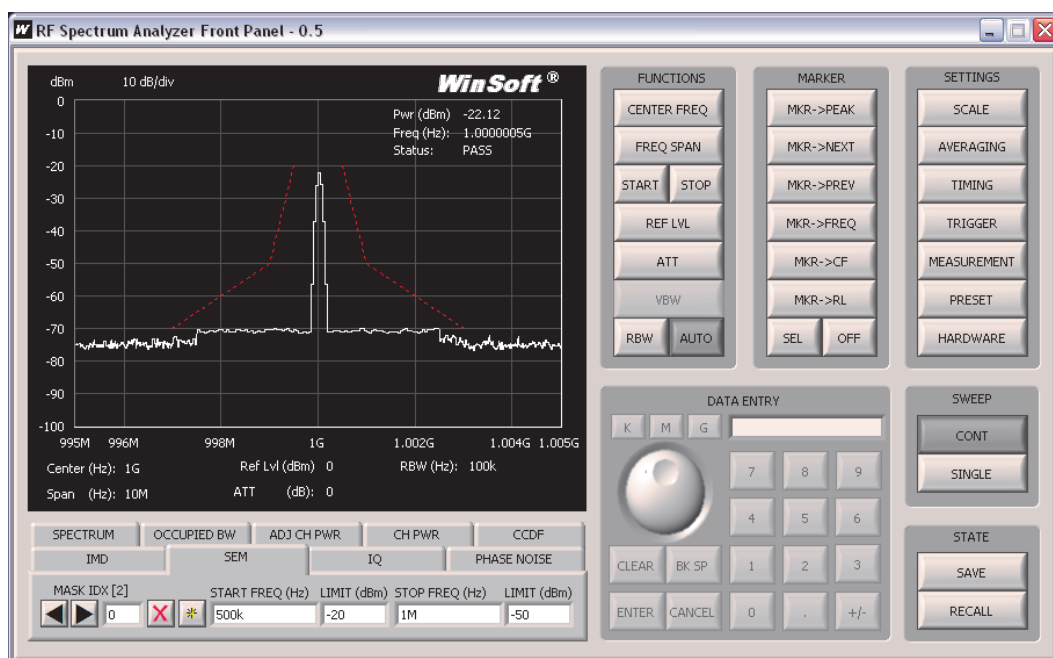
Attenuation, Scale, etc.) are displayed in real-time the same way that a traditional analyzer does. You can select Markers such as *Marker to peak* and *Marker to Frequency*.

The RFA takes advantage of the exceptional price/performance of National Instruments PXI RF modules while providing the look and feel of a traditional Spectrum Analyzer plus making it possible to perform the most highly used spectrum analysis and power measurement .

The RFA Supports the following NI PXI modules:

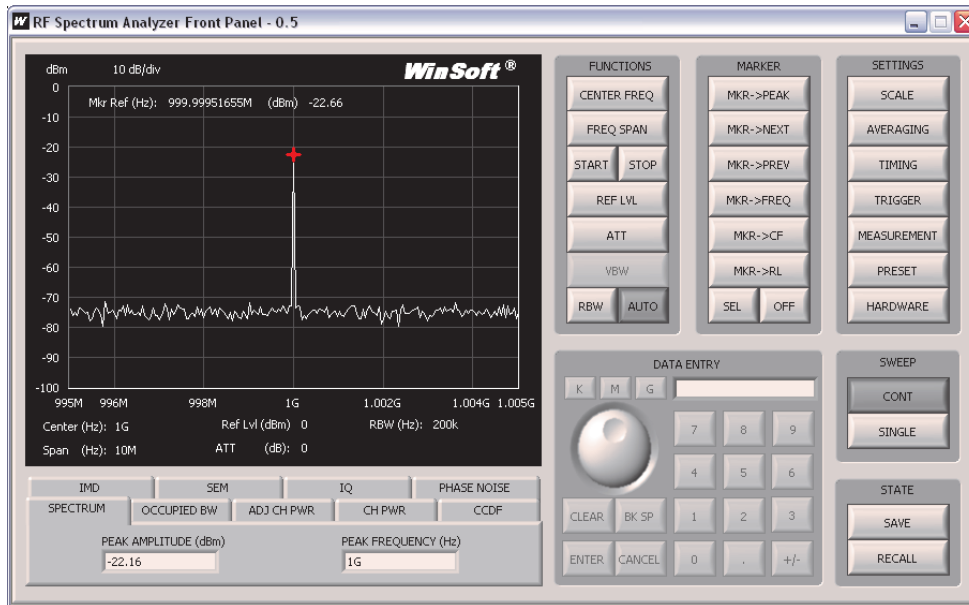
- NI PXI-5661 2.7 GHz Vector Signal Analyzer (9 kHz to 2.7 GHz with 20 MHz instantaneous bandwidth)
- NI PXIe-5663 6.6 GHz Vector Signal Analyzer (10 MHz to 6.6 GHz with 50 MHz instantaneous bandwidth)

The support of a touch screen, combined with other PXI modules, makes the RFA an excellent choice for Bench Top testing, training aid and an R&D analysis.



RFA - Use the PXI RF modules as if you Have a Spectrum Analyzer

SMART
INVESTING



A traditional
Spectrum Ana-
lyzer with the
Cost and Flexi-
bility of RF PXI
modules

Supported Measurement Types

- Full Frequency Span
 - Spectrum
- Span limited to hardware instantaneous bandwidth
 - Occupied Bandwidth (OBW)
 - Adjacent Channel Power (ACP)
 - Channel Power (CHP)
 - Complementary Cumulative Density Function (CCDF)
 - Intermodulation (IMD)
 - Spectrum Emission Mask (SEM)
 - IQ (Waveform)
 - Phase Noise

Software Features

- User configurable instrument name
Name is stored between runs. Entered one time only
- Ability to save and recall panel state
- Display up to three (3) markers
 - Peak Search
 - Delta measurements
- User configurable units (dBm, dBmV, dBuV, Volts, Watts) and scale (dB/div)
- User configurable number of averages and average type (RMS, LOG, MAX)
- User configurable acquisition rate
- Selectable frequency axis labeling (absolute or relative-to-center)
- Continuous and Single Sweep modes
- Data entry keypad supports mouse/touch and keyboard entry
- Compatible with touch panel display



ISO 9001:2008 Certified

WinSoft®

1932 E. Deere Ave. Suite 110
Santa Ana, CA 92705
Voice 949-428-4844 x 202
Fax 949-428-4842

1250 Oakmead Pkway, Suite 210,
Sunnyvale, CA 94085
408-501-8865

Email: marketing@winsoft.com
www.winsoft.com